

versiondog Factsheet:

versiondog Factory Floor Status



versiondog - For more efficient production

versiondog is the leading version control and data management software solution for automated production. It makes tracking changes and safeguarding data significantly more efficient.

versiondog brings order and clarity where project data needs to be continually changed and made available from a central source. The increased safety, security and certainty provided by this software system quickly results in measurably increased productivity. versiondog makes it easy for you to optimise the interplay between all your different types of robots, controllers, field devices, drives, programming languages, file formats and software applications.

This data management system gives you ultimate data traceability, minimising your risks and costs, and saving you time and effort.

versiondog Factory Floor Status

Factory Floor Status is a web-based versiondog add-on. It displays—in table form—an overview of all networked and non-networked devices and equipment that are integrated in the versiondog system. The add-on allows you to monitor each device according to a number of criteria.

versiondog Factory Floor Status is an invaluable aid for predictive maintenance and in ensuring sustained high production quality in automated facilities. It displays the current status of automatic backup and compare jobs and the results of comparison with the latest version of the project on the versiondog system. Additional device-specific information is also monitored and displayed so that the precise status of each device is always readily available and can be clearly seen.

The versiondog Factory Floor Status add-on was released in versiondog 4.0 and displays two kinds of reports—Factory Floor Status – Device overview—and—Factory Floor Status – S7 MLFB overview.

Whether you need to monitor RAM usage, forced values or see what firmware is installed on which PLC control panels, Factory Floor Status shows you everything at a glance from wherever you are on the network.

From versiondog 5.0 onward, an overview of the SEW firmware is also included, as are device specific forced value monitors for RSLogix 5000, Schneider Electric Unity and GE iFix.

Device information

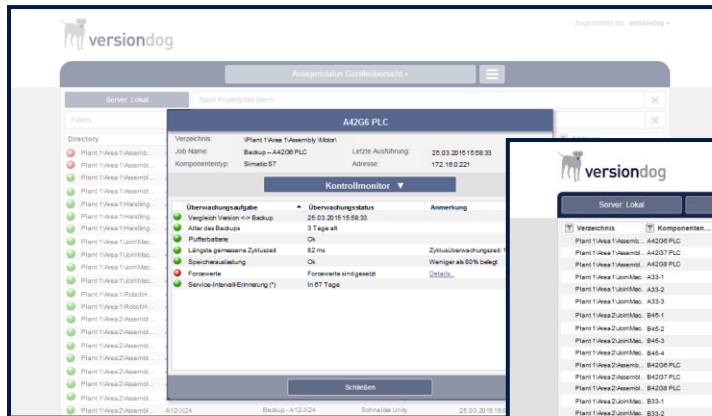


Fig. 1: Status information on demand

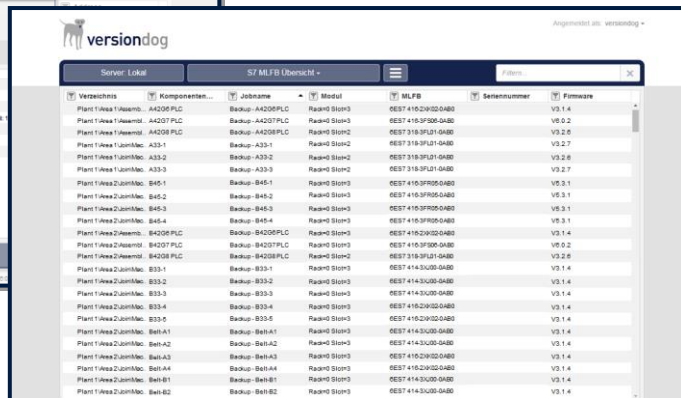


Fig. 2: The S7 MLFB Overview shows where each MLFB is located and what firmware is installed

Features and functions

List of all devices and equipment integrated in the versiondog system	✓
General monitoring: <ul style="list-style-type: none"> - Comparison results of the most recently executed job - Warning if a backup is not made within a user-specified time period 	✓
S7 monitors (for S7-300, S7-400) <ul style="list-style-type: none"> - MLFB overview incl. installed firmware - Forced values monitor - Cycle time monitor - RAM usage monitor - Battery status monitor (availability of this monitor depends on the specific hardware used) 	✓
Forced value monitoring for controllers <ul style="list-style-type: none"> - RsLogix5000 - Schneider Unity - GE Proficy ME 	✓
Overview of SEW firmware	✓
All reports can be downloaded/exported as CSV files	✓
Web client with SSL encryption <ul style="list-style-type: none"> - This product includes software developed by the OpenSSL Project for use in the OpenSSL Toolkit. (http://www.openssl.org/) - This product includes cryptographic software written by Eric Young. (eay@cryptsoft.com) 	✓
One-click installation of the versiondog web server	✓
Tutorial available in versiondog INFO	✓

System requirements

versiondog release	4.0 onward
Supported browsers	Internet Explorer, Chrome, Safari

Links

https://www.versiondog.com/versiondog_factory_floor_status.html

<https://youtu.be/c65Z7oGxayQ>

More information

Agilitec B.V.

Tel: +31(0)76 515 65 72

Email: info@agilitec.nl

Web: [**www.versiondog-benelux.nl**](http://www.versiondog-benelux.nl)